

DAN NOU KAZYE

The Seychelles Fishing Authority Newsletter



'Responsible for Sustainable Fishing'



Top News

Fisheries festival a huge success

Anse Aux Pins fishermen receive new facility



Illegal fishing causing a decline in lobster population

SFA celebrates Fisheries on Praslin

The people on Praslin got a glimpse of what SFA is about through the authority's first Fisheries Festival held at its Baie Ste Anne facility. This event was part of the build-up to SFA's 40th anniversary and aimed to showcase the work and responsibilities of SFA while promoting fisheries.

The SFA staff from six different departments set up a fun exhibition showcasing their work and some marine animals, while the public was able to ask pertinent questions they were curious about. The exhibition also intrigued some school children who got the chance to also walk away with a few souvenirs by participating in small games laid out by some departments.

Part of the festival which attracted a huge crowd was the sale of value-added fish products, highly demanded country-wide. This included canned tuna products that were sold at an affordable price and other fish-based products prepared by SFA's own Product Development and Quality Assurance Department. These were fish burgers, nuggets, spring rolls and fish balls.



The PDQA team even cooked up a storm with some delicious fish dishes for everyone to sample, like grilled fish, shark chutney, tuna belly stir fry, and the mouth-watering salted tuna tail coconut curry. Additionally, spaghetti was served with fishballs instead of meatballs, giving it a local twist.

The festival also featured the island's fishing community. Neddy Rose, a fisherman for more than two decades, was present to demonstrate his skills in making fish traps, while Sandro Lesperance, another fisherman showcased how to tie different nautical knots. He was accompanied by 8-year-old Amael Lesperance, who has developed an interest in the profession from a very young age. He also demonstrated his skills in knot tying.

The festival was a huge success, with the organizing committee saying the turnout surpassed their expectations.

As for the public, while appreciating the initiative to have this activity, expressed their wishes to have even more goodies at future events.

Anse Aux Pins project finally delivered!

The fishermen in Anse Aux Pins have received a new, state-of-the-art fisheries facility. The facility consists of a fish market, 20 gear stores, an ice plant, administrative offices, a seawall, a slipway, and a pontoon.

The project, which began in 2021, cost a total of SCR 23.5 million and was funded by the European Union under the 2020–2026 Sustainable Fisheries Partnership Agreement. The decision to initiate the project was based on the high demand for gear stores and a more modern and hygienic market from the fishermen of Anse Aux Pins

The facility was inaugurated by the President of the Republic, Mr. Wavel Ramkalawan, the Minister for Fisheries and the Blue Economy, Mr. Jean Francois Ferrari and the EU Ambassador for Seychelles, Mr. Oskar Benedikt. This was in a ceremony held as one of SFA's activities celebrating its 40th anniversary. It was organized in conjunction with the National Day celebrations.

During the ceremony, Minister Ferrari emphasized the necessity of the state-of-the-art facility, stating, "With the increasing fishing activities in this area, it became evident that a proper fisheries facility is essential to facilitate the lives of the fishers, as well as the customers who come to Anse Aux Pins to buy fish from the community's artisanal fishers. It encourages good hygiene, maintains the quality of the fish sold by the fishers, and ultimately enhances their quality of life by providing a secure place to keep their engines and fishing gears, as well as a conducive area for selling and purchasing their catch."

Dr. Jan Robinson, the CEO of SFA, also stressed the importance of proper and adequate fisheries facilities, as well as the significance of sustainable fisheries and adherence to the measures of the Mahe Plateau Trap and Line Fishery Co-Management plan.

The opening ceremony featured a special performance by students from Anse Aux Pins Primary School, singing and enacting the popular children's song 'sa pov pti peser'. Following the ceremony, customers began buying fish at the brand-new market.



Fish... more than just food



People use fish mainly for consumption, but a recent training clearly showed that fish can have other uses. The two day training held at the Product Development and Quality Assurance lab was called "Basics of Value Addition Using Fish Processing By-Products," focusing on using fish skin to make leather in Cycle 2.

The session was led by James Ambani, a Blue Economy Expert and the CEO of Ambani Fish Leather Limited. It covered various techniques for cleaning fillet, skin, and trimming fish, and using the skin for products other than consumption.

The training drew a great turnout from potential entrepreneurs and students from the Seychelles Maritime Academy, as well as PDQA staff. It was a collaborative effort with Entreprenre Au Feminin Ocean Indien Seychelles (EFOIS) and COMESA Federation of Women in Business (COMFWB) to raise awareness about economic opportunities in the Blue and Circular Economy sector among women, girls, and youth



Geva Remy, one of the participants, mentioned that she learned how to utilize different parts of the fish for value addition, such as using its flesh for fillet and the remaining parts and bones for dog food.

The training concluded with participants receiving certificates, and the funding for the training was provided by EFOIS.



SFA hosts IOTC Annual Tuna Compliance Network meeting

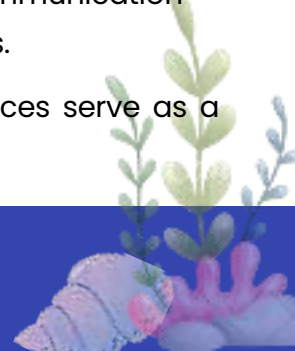
Officers responsible for compliance in the five tuna Regional Fisheries management organizations (RFMO) met in Seychelles to share information about monitoring, control and surveillance process and compliance best practices, through the Tuna Compliance Network meeting (TCN)

Four Tuna commissions, representing the Indian, Atlantic, Western & Central and Pacific Ocean were physically present whilst representative from the Southern region joined the meeting virtually. This year's meeting was organized by IOTC, and was held in the J & S SFA meeting room.

The annual meeting provided a unique opportunity for officers responsible for compliance to not only exchange experiences but also to strategize on addressing common challenges, sharing best practices, and fostering greater cooperation among nations involved in tuna fishing. The Tuna Compliance Network was established in 2017 to promote communication and cooperation between the five tuna Regional Fisheries Management organizations.



The unwavering commitment and shared vision for sustainable tuna fishing practices serve as a beacon of hope for the preservation of our marine ecosystems.



Fisheries Research team shares results of lobster fishery survey

The latest findings from the lobster fishery survey conducted from October to November 2023, suggest that illegal fishing may be contributing to a decline in the lobster population near the inner islands of Seychelles.

The primary objective of this recent survey was to ascertain the distribution and abundance of spiny lobsters, particularly the long-legged spiny lobster, the pronghorn spiny lobster and the painted spiny lobster, and to gather biological and ecological data concerning spiny lobster on the granitic and coralline islands of the Mahé plateau.

At a workshop to review the survey results, Mrs. Kettyna Gabriel, the senior fisheries scientist at the Seychelles Fishing Authority (SFA), shared that the survey found more lobsters near the outer islands, such as Bird Island and Denis Island, compared to the Mahe plateau area. Mrs. Gabriel explained that this difference could be due to fishing pressure, particularly illegal, unreported, and unregulated (IUU) fishing, which persists even during closed seasons. Especially considering the proximity of the area. It was also mentioned that habitat deterioration or loss and multiple incidents of coral bleaching could also explain these results. The survey also revealed the heaviest lobsters were found mostly in the southern and western regions of Mahe.

Following the survey, Gabriel emphasized that a comprehensive stock assessment for lobster is needed. She stressed that the survey provides just a glimpse of the lobster population in Seychelles and that further investigation is necessary.

Gabriel mentioned that future management measures would depend on the results obtained from the more in-depth investigation.

Looking forward, SFA plans to conduct more research near the outer islands to gain a clearer understanding of the lobster distribution compared to Mahe.



Staff get better insight into ammonia gas

The Ports Management and Facilities staff attended a familiarisation and training presentation on ammonia.

The session took place at the Seychelles Maritime Academy at Providence. The one-day training session was initiated by the Health and Safety Section to better prepare the staff in case of any incident involving ammonia.

The scope of the presentation was on ammonia safety and its applications, emergency responses and preventing ammonia leaks.

For a few of the staff, this served as a refresher training for what they had already learned previously, while for new staff members, this Ammonia Safety training provided valuable insight into this dangerous chemical, including handling and emergency response procedures in case of ammonia leak.





SFA goes on Paradise FM's Mic Live

Three staff members from the Seychelles Fisheries Authority (SFA) participated in a live interview on Paradise FM's Mic Live radio show to raise awareness about SFA's work, particularly focusing on marine ecosystems and the issue of illegal, unreported, and unregulated fishing. The interview was part of the educational and awareness activities organized for SFA's 40th anniversary. It provided Mr. Rodney Govinden an opportunity to highlight the work of the Fisheries Research Department and Ms. Karyss Auguste talked about the efforts of the Monitoring, Control, and Surveillance Department in combating illegal fishing in Seychelles waters.



Additionally, the interview was used to promote the 40th-anniversary celebrations, where Mrs. Tresa Bastienne talked about the whole campaign surrounding the anniversary and upcoming activities. The staff also took questions from the public through phone calls and text messages during the interview.

Upcoming activities

40 YEARS
Charting Sustainable Horizons
SEYCHELLES FISHERIES AUTHORITY

Theme: Celebrating 40 years of Fisheries Development: Charting Sustainable Horizons

Participants: Any group of 2 family members

Age limit: 16 years and above

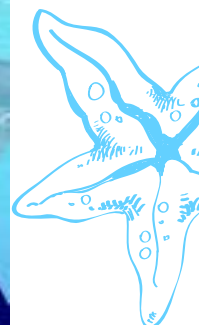
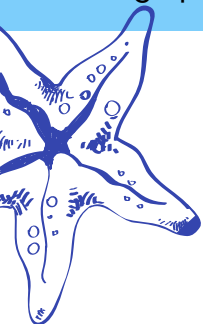
STAR PRIZE: SCR15,000

Registration Date: 08th July - 26th July 2024

A thrilling quiz competition featuring questions related to our organization's history, achievements, and impact over the past four decades.

Participants will compete for exciting prizes and bragging rights.

Registration form can be collected at the SFA HQ (reception desk)



Upcoming activities

Song Competition

The Seychelles Fishing Authority is launching a song competition for its 40th anniversary. The competition is open for local artists and producers to produce a new theme song for the SFA.

*Theme: Celebrating 40 years of Fisheries development
Charting Sustainable Horizons*

STAR PRIZE: SCR30,000

SECOND PRIZE: SCR15,000 & THIRD PRIZES: SCR10,000

OPEN REGISTRATION 13TH MAY - 26TH JULY

- Song must be original and have not been performed or broadcasted on any platform
- Can be in any three of our national languages
- Song must reflect the theme
- Song must not be more than 4 minutes
- Participants will have to submit a demo of 3 minutes, then upon selection they will proceed for recording.

For more information contact
Mr. Antonio Barba on 2545442 or Mr. Sam Dubois on 2358186

Poster Competition

The Seychelles Fishing Authority is launching a poster competition for its staff and children.

Theme: Celebrating 40 years of Fisheries Development Charting Sustainable Horizons

Registrations: 6th June - 13th June
Registration form can be collected at the SFA. Tel: 2358186/2545442

DEADLINE
Entries must be submitted by the 26th of July at the SFA office.

Categories:

- 1st category (6-9 years)
- 2nd category (10-13 years)
- 3rd category (14-16 years)
- 4th category (SFA Staff)

Criteria:

- Posters must be original and have not been showcased on any platform
- Can use any type of painting materials.
- Posters should reflect the theme.
- Posters will be judged on creativity.
- Posters must be hand-drawn.
- Participants must be SFA staff and/or their child.

SPORTS DAY

JULY 26, 2024.
8:00 A.M. - 16:00 P.M.
BEACH SOCCER ARENA

Joint Management Area (JMA) sea cucumber exploratory fishery

In January 2023, the Mauritius/Seychelles Joint Commission of the Extended Continental Shelf invited proposals from eligible and qualified operators registered in Mauritius and Seychelles to undertake sustainable exploratory harvesting of sea cucumber in the Joint Management Area (JMA). The two States developed a framework setting the conditions governing sea cucumber fisheries in the JMA. A total of three applications were received and in June 2023, two operators were successfully granted a one-year authorizations to operate in the JMA. The first fishing trip started in September 2023 and a total of ten fishing trips were undertaken to May 2024.

The average length of the trips were eighteen days and three species types of sea cucumber species were landed:

White teatfish (*Holothuria fuscogilva*) – 92% total landings

Flower teatfish (*Holothuria* spp. Type “Pentard”) – 7% total landings

Prickly redfish (*Thelenota ananas*) – 1% total landings

Trip	Trip duration (Days)	White Teatfish (Pieces)	White Teatfish (kg)	Flower Teatfish (Pieces)	Flower Teatfish (kg)	Prickly redfish (Pieces)	Prickly redfish (kg)	Total Landings (pieces)	Total Landings (kg)
1	28	4339	2748.1	643	424.2			4982	3167.3
2	13	5062	2737.1	16	30			5078	2767.1
3	16	5000	2535.7					5000	2535.7
4	13	4831	2324.4	137	91.7			4968	2416.1
5	23	4800	2507	149	76.3			4949	2583.3
6	14	4766	2557.49	270	156.1			5036	2713.59
7	10	2444	1159.9	601	377.7			3045	1537.6
8	18	3898	1797.7	68	31.3			3966	1829
9	28	4393	2320.2	587	423.6			4980	2743.8
10	20	2792	1382.3	233	130.7	262	130	3287	1693
Total	185	42325	22084.9	2704	1721.6	262	130	45291	23986.5



All 10 trips undertaken was sampled for length data by species. The majority of length sampling was undertaken when the vessels offloaded their catch during the inspection period. In some cases, sampling was undertaken at the processing factories. In 2023, the lowest sampling was trip number 3 with only 4.2% of the catch sampled. A total of 2189 White teatfish and 529 Flower teatfish has been sampled until December 2023 which consist respectively of 7% and 43% of the total catch.

The average length for White teatfish sampled was 22.52 cm and for Flower teatfish it was 24.06 cm. The smallest White teatfish caught was 12 cm during trip 5 whilst the largest was 38.5 cm during trip 2. Both the smallest (14cm) and the largest (35cm) Flower teatfish was caught during trip 6 . The majority of the sampled White teatfish catch was between 16 – 30 cm whilst for Flower teatfish it was between 19 – 29cm. The JMA fishing expedition ended in May 2024 and ongoing negotiations between the two countries continue in order to explore future prospects for the exploitation of fisheries resources within the JMA.



SFA Director attends TGMI training

The Chairman of SFA, Mr. Radley Weber, along with members of the SFA board, Mr. Beatty Hoarau, Mr. Franky Laporte, and CEO Dr. Jan Robinson, participated in a 3-day training organized by the Guy Morel Institute and the Public Enterprises Monitoring Commission (PEMC).



The training, led by facilitators Mr. Pedro Pierre and Mr. William Zarine, focused on critical governance topics with the aim of enhancing board effectiveness and leadership skills. The main goal of the training was to improve the capacity of Public Enterprise Boards of Directors, with a focus on corporate governance intricacies and best practices, which are crucial for effective board performance.

The exclusive training was designed for Board Directors of Public Enterprises and Government Agencies in Seychelles, and provided valuable insights and skills that will benefit the members and their organizations.

Fishing season periods

SPECIES	PERIODS	MONTHS
Lobster	8 months	October to June
Sea Cucumber fishing	3 months	December to March
Spanner Crab License fee	12 months	October





A day in the life of a fisherman



Waking up extremely early in the morning, spending hours at sea and not forgetting doing physical labour in the sun, these are some of the traits that goes with being an artisanal fisherman. A few students from Plaisance Secondary School got the chance to learn more about it during their visit at the Victoria Artisanal Port recently.

The visit was an initiative of their technical education teacher, Sir Jorcy as part of their curriculum when learning about fisheries. During their visit, the 14 students met with actual fishermen who shared their experiences, including different opportunities and benefits of being a fisherman. The students also got to go onboard SFA's Lamitie vessel to get an up-close and personal experience of a fishing vessel. Leah Sedwick and Samiir mariotto were two students who attended the visit. Leah said that as a girl who wants to work in this industry, the visit has given her an insight of the daily duties of fishermen such as where they sleep which she was clueless before. Samiir also expressed that he was very happy with the visit saying he learned on some of the equipment they use for fishing and tools they use in harvesting sea cucumbers.



Turning La Misere primary students into little fisheries scientists



As part of activities to commemorate World Ocean Day, the fisheries research department was invited to La Misere primary school to give the young children a glimpse into their world of fisheries research. The group of 6 to 11-year-olds was intrigued by the presentation about the different species they work with, such as lobster, spanner crab and sea cucumber.

The two fisheries scientists also explained what the department does to contribute to the protection of the ocean and its commercial fishery resources. The presentation also covered the different stages involved in carrying out research work and simplified the technical terms they use.

At the end of the presentation, the two staff members had their hands full answering many interesting questions that piqued the children's interest.



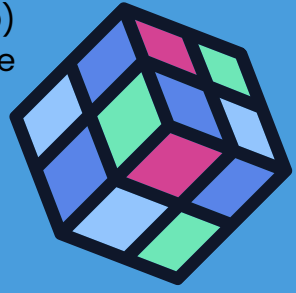
SFA dresses up its buildings for national day



SFA 40th Anniversary Quiz

STAR PRIZE:
SAMSUNG
S24 ULTRA

1. "Institute de Recherche pour le Developpement" (IRD) works in close collaboration with SFA, what was the first name of IRD?
2. It which year was the Aquaculture Unit in SFA created?



Send your answers to the PR team

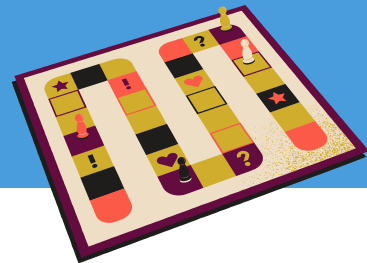
- Winners will be defined through a draw
- Names of all participants with right answers will be also put in a draw bag for the star prize
- All prizes will be presented in the 40th anniversary official event on the 31st August 2024.



Answer of last month's quiz

1. In which year SFA received it's first Research vessel and what was the name of the vessel? **February 1988, Etelis**
2. When was the Providence Fishing Port officially opened? **28th June 2010**

Winner of last month's quiz: Ms. Brigitte Pillay



Healthy tip from the Health and Environment Club

Get Enough Good Sleep

There is a very strong connection between sleep quality and quantity and your immune system. You can keep your immune system functioning properly by getting seven to eight hours of sleep each night.



Seychelles Fishing Authority
Fishing Port, PO Box 449,
Victoria, Mahé, Seychelles
Office: +248 467 03 00
Website: www.sfa.sc

Contact the PR team to book a slot in the SFA newsletter for any internal communication and awareness of:

- Departmental events and trainings
- Processes and procedures
- Upcoming committee and club events etc..

