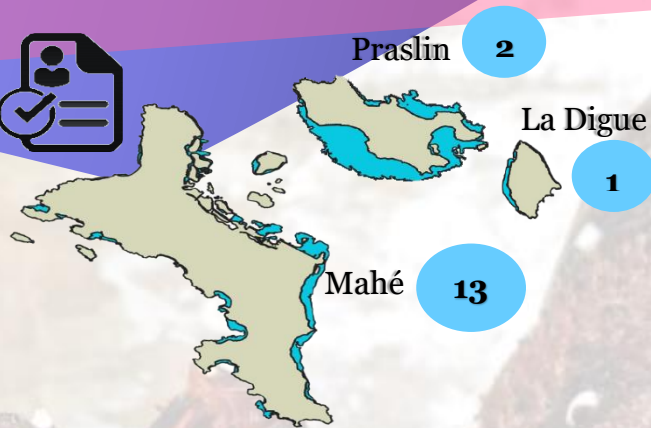


LOBSTER FISHING SEASON 2020/2021



- The Lobster fishery was opened from December 21st 2020 and was scheduled to close March 20th 2021 (3 months).
 - However due to low fishing performance resulting from bad weather, the fishing season was extended for 1 more month and was closed on April 20th 2021.
- All 16 licenses were allocated (13 on Mahé, 2 on Praslin and 1 on La Digue; **Figure 1**).

Figure 1: Number of fishing license allocated



Data collection methods

- 1) Fisher logbooks – Catch and effort data recorded by fishers
- 2) Biological sampling program recorded by SFA
 - a) Carapace length (mm)
 - b) Weight (kg)
 - c) Sex (M/F)

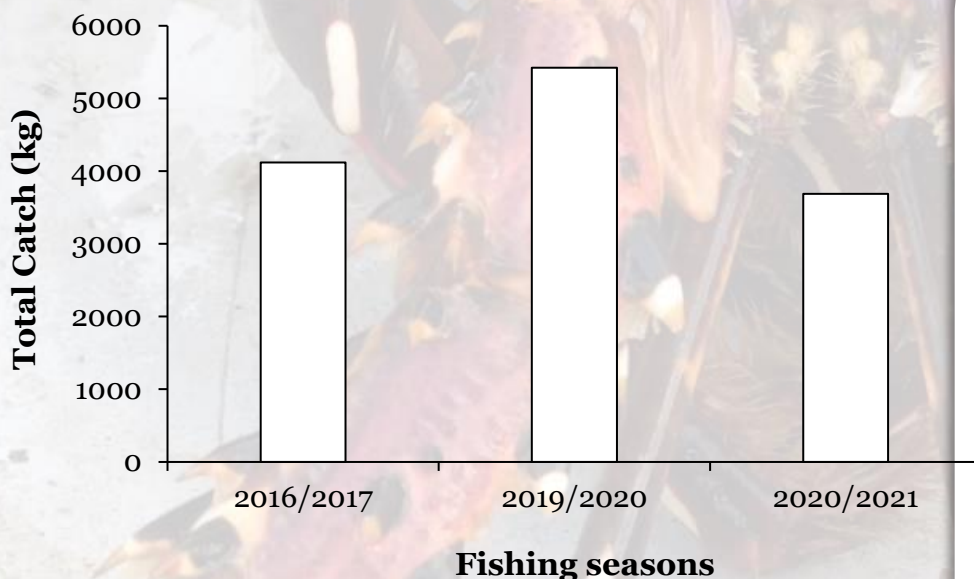
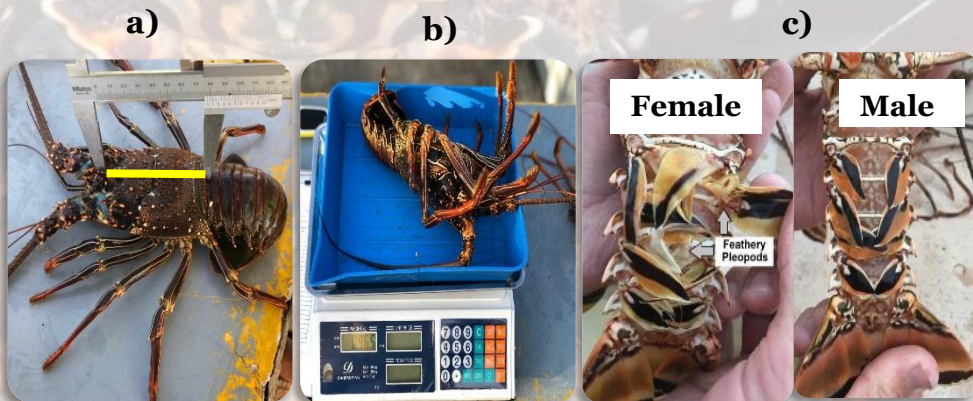
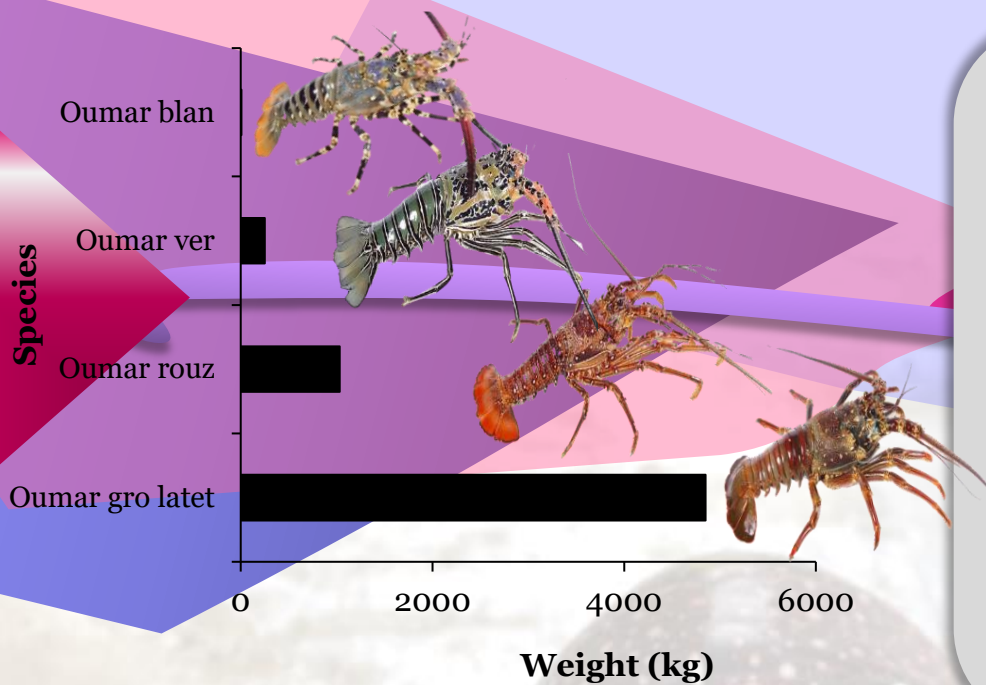


Figure 2: Total catch (kg) of lobsters per fishing seasons without fishery extension

Fishing summary

Without fishery extension (3 months):

- Total catch would be 3690 kg (**Figure 2**).
- Representing a 32% and 10% **decrease** respectively when compared to the 2 previous seasons
- A total of 157 fishing trips would have been recorded compared to:
 - 196 in 2019/2020 and,
 - 238 in 2016/2017
 - **Decrease** by 19% and 34%.



With fishery extension (4months):

- Total of 6140 kilograms (kg) of lobsters caught compared to:
 - 5421 kg in 2019/2020
 - 4120 kg in 2016/2017
- Total kg per species:
 - 4849 kg Oumar gro latet
 - 1031 kg Oumar rouz
 - 253 kg Oumar ver
 - 8 kg Oumar blan (**Figure 3**)

Representing a 13% and 49% **increase** when compared to the 2 previous seasons.

Figure 3: Total weight of lobsters caught per species

• Lobster fishing was mostly concentrated **around Mahé Island** (48% of total catch) (**Figure 4**)

- A total of **242 fishing trips** were recorded 23% increase compared to 2019/2020
- 2% increase compared to 2016/2017

• Lobster abundance determined by the catch per unit effort (CPUE) (kg per number of trips) was **25 kg/trip** compared to (**Figure 5**):

- 28 kg/trip in 2019/2020 (**8% decrease**)
- 17 kg/trips in 2020/2021- (**49% increase**)

The most common fishing technique was snorkeling (**94%**)

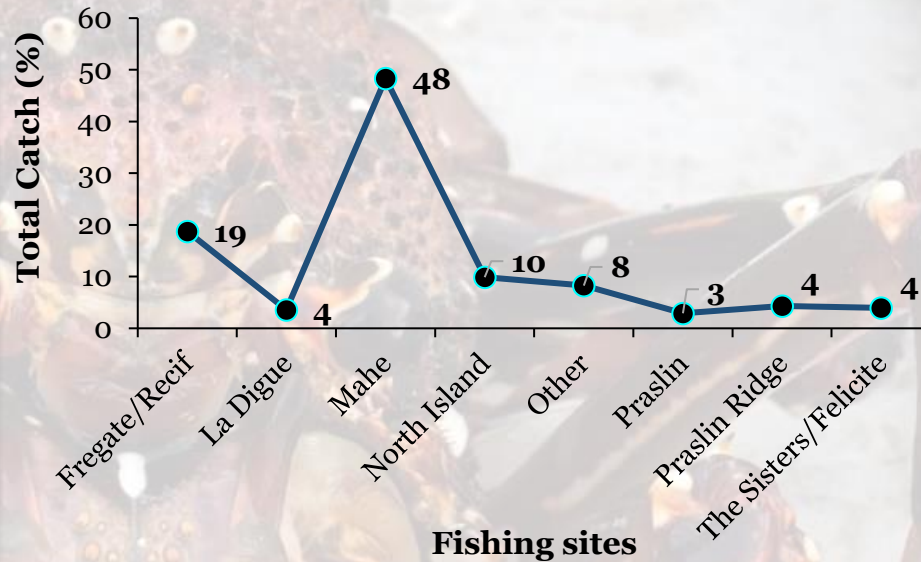


Figure 4: Percentage (%) catch by fishing sites

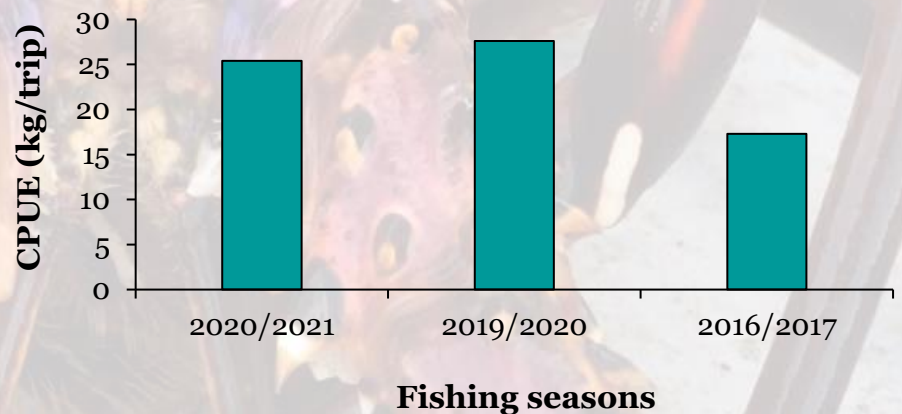


Figure 5: Catch per unit effort (kg/trips) per fishing seasons

Conclusion

- Lower CPUE found in the 2020/2021 season possibly indicates signs of reduced lobster abundance- this will be confirmed with the upcoming 2021 PLMP survey

