

LOBSTER FISHING SEASON 2021/2022



- The Lobster fishery was opened from December 17th 2021, and was scheduled to close February 16th 2022 (2 months).
 - 1 month less than the usual opening period.
- All 16 licenses were allocated (10 on Mahé, 5 on Praslin and 1 on La Digue; **Figure 1**).

Figure 1: Number of fishing license allocated.

Data collection methods

- 1) Fisher logbooks; Catch and effort data recorded by fishers.
 - 2) Biological data sampled and recorded by SFA.
- a) Carapace length (mm)
 - b) Weight (kg)
 - c) Sex (M/F)

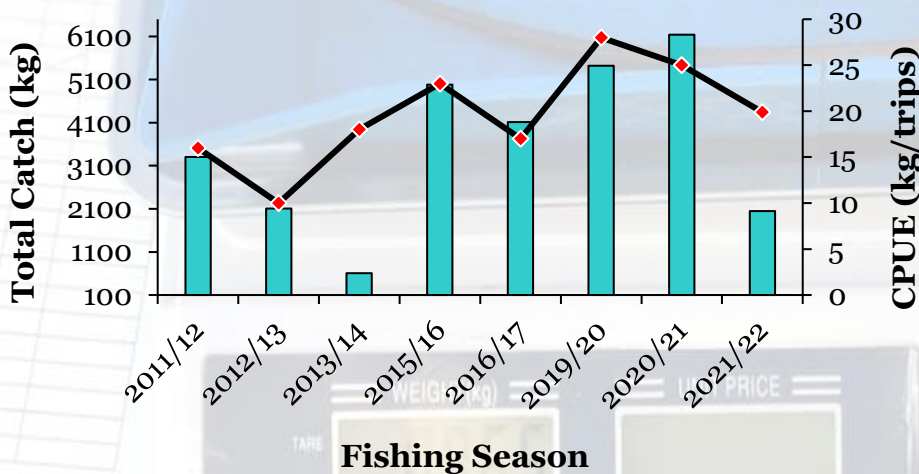
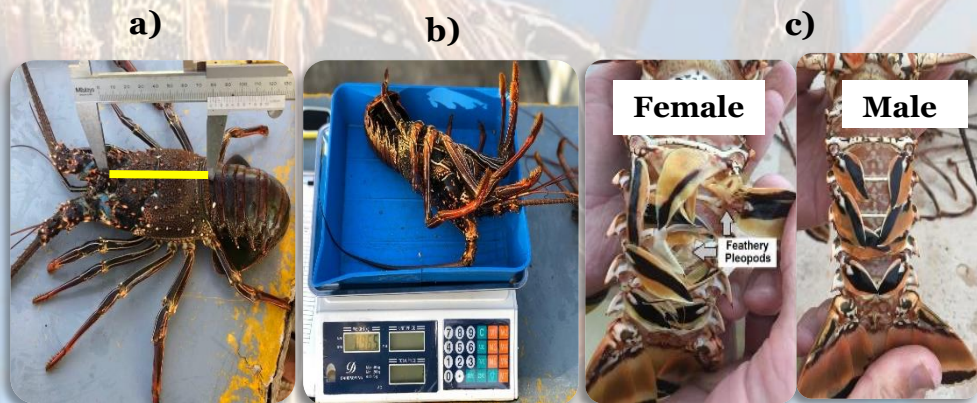


Figure 2: Total catch (bars) and fishing effort (kg/trip) (line) from 2011/2012 to 2021/2022.

Fishing summary

Total catch

- Total of 2045 kilograms (kg) of lobsters caught (**Figure 2**):
 - This represents **67%** decrease from 2020/2021 (6140kg) and **62%** decrease from 2019/2020 (5421 kg).

Catch per Unit Effort (CPUE)

- Lobster abundance determined by the catch per unit effort (CPUE) was **19.9 kg/trip** (**Figure 2**):
 - This represents **22%** decrease from 2020/2021 (25 kg/trip) and **28%** from 2019/2020 (28 kg/trip).

Fishing trips

- Lobster fishing was mostly concentrated **around Mahé Island (Figure 3)**.
 - **63%** of lobsters caught around **Mahé**.
- A total of **103 fishing trips** were recorded:
 - This represents **57%** decrease from 2020/2021 (242 trips) and **47%** decrease from 2019/2020 (196 trips).

Species composition

- Total kg per species (**Figure 4**):
 - 1502 kg Oumar gro latet
 - 506 kg Oumar rouz
 - 37 kg Oumar ver

Fishing method

- The most common fishing technique used was snorkeling with **99%** (**Figure 5**).

Conclusion

- CPUE found in the 2021/2022 season was considerably lower than previous seasons. This is possibly a sign of reduced lobster abundance.
 - However, this will be confirmed after the 2022 fisheries independent survey to be held in October.

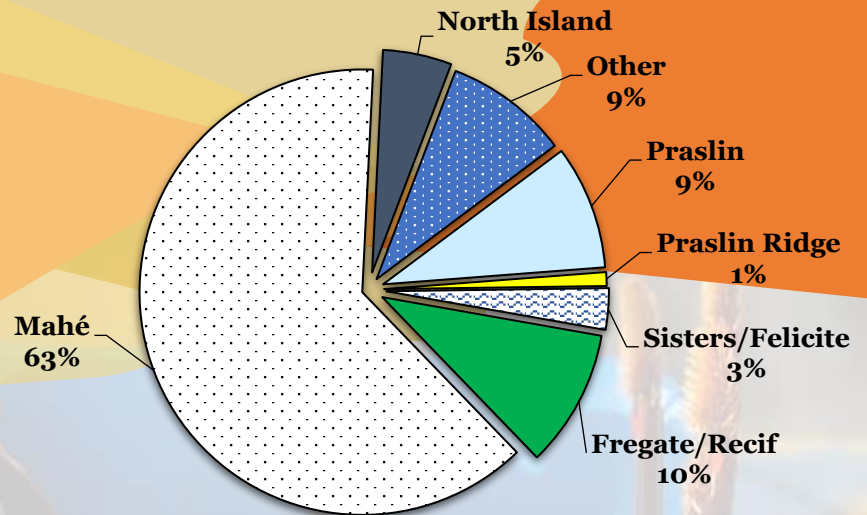


Figure 3: Percentage (%) catch by fishing sites.

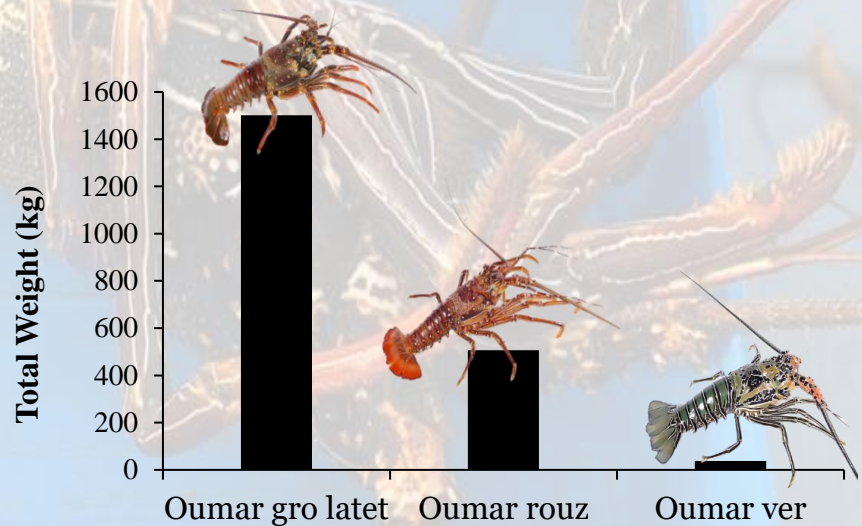


Figure 4: Total catch per species.

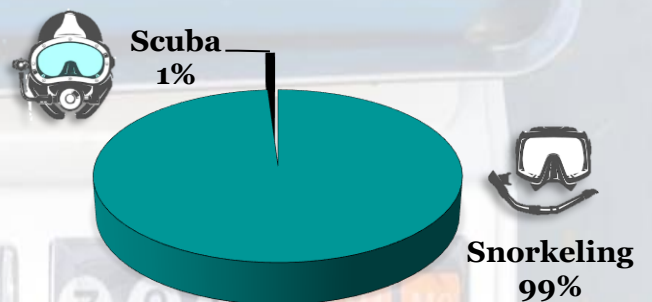


Figure 5: Fishing methods used.

Acknowledgment